

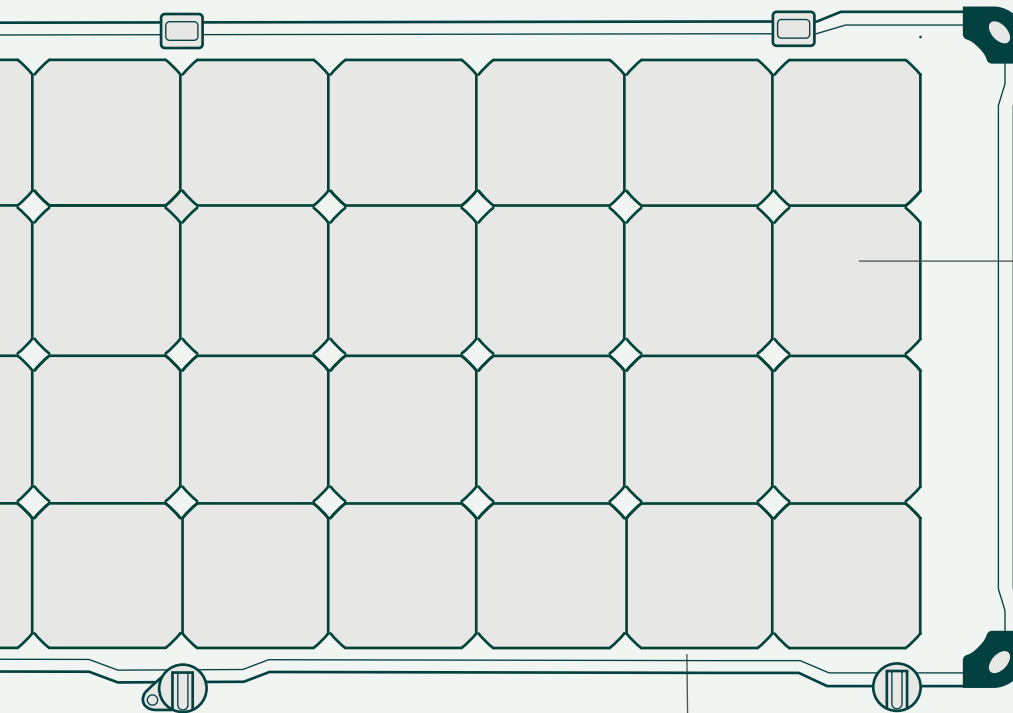


# dropLeaf

LIGHTWEIGHT, RIGID, DEPLOYABLE

Rigid carbon-fiber foundation is self-supporting, forming uncompromising strength at 1/4 of the weight and thickness of standard glass panels.

ROC



SunPower Maxeon monocrystalline cells maximize power output at 25% efficiency.



Polycarbonate front sheet provides superior UV protection and abrasion resistance.

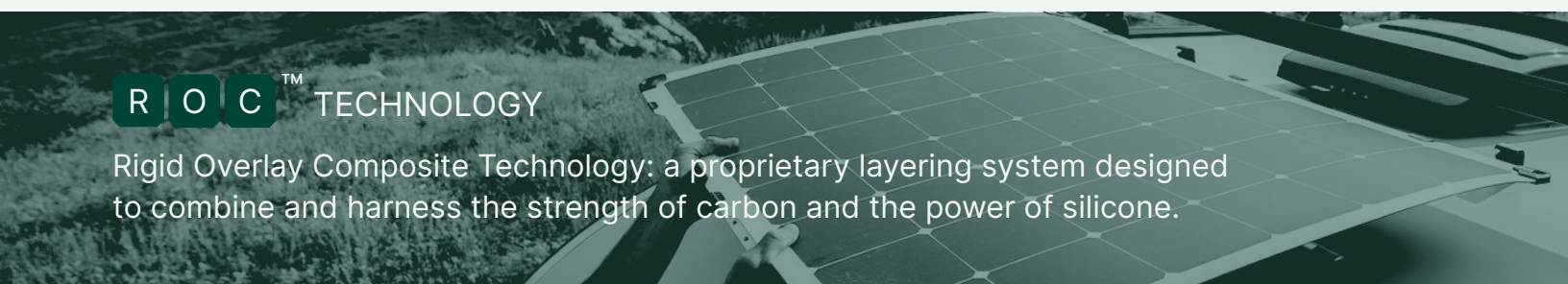
ROC 

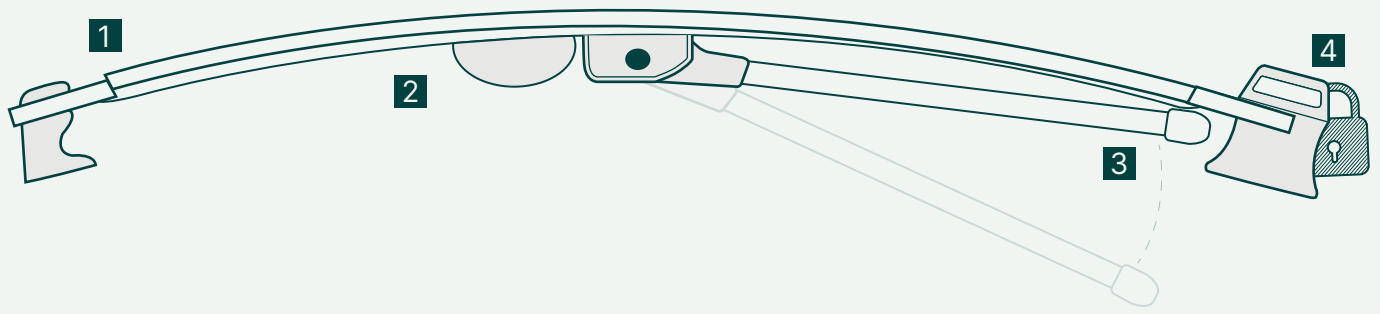
Sleek aesthetics add to any trailer, with matte black cells and carbon weave finish. Tried and tested resistance to harsh weathers and temperatures.



ROC<sup>TM</sup> TECHNOLOGY

Rigid Overlay Composite Technology: a proprietary layering system designed to combine and harness the strength of carbon and the power of silicone.





“LightLeaf Solar's panels are the best quality panel with the absolute best aesthetic qualities on the market! Our clients love the look and functionality that comes with their panels.”

DENISE BENNETT, CO-OWNER OF FANTOM TEARDROPS

1 Paper-thin profile measures just 3/8in (9mm).

---

2 Deliberately molded curvature for a seamless fit on curved structures and guarantee maximum sun exposure. Discreet junction box sits flush with panel's curve.

---

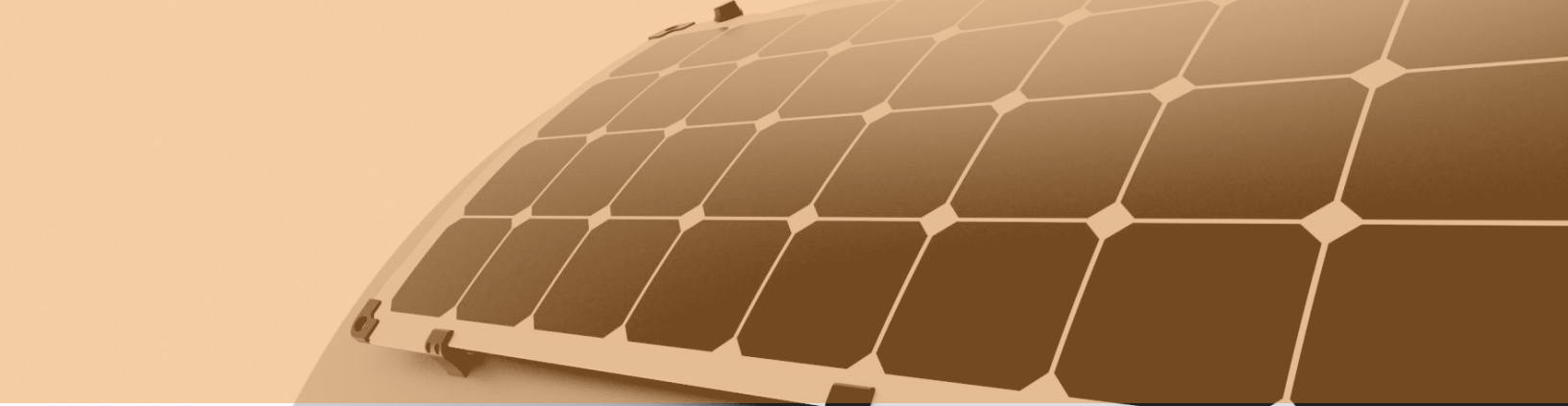
3 Retractable kickstands ensure efficient sun orientation and convenient setup.

---

4 Locking anchor provides peace of mind when left alone.

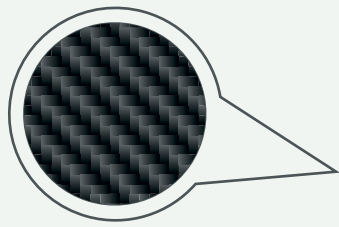
---





“We're delighted with the LightLeaf panels!  
The quick removal is an awesome feature and  
the power output's been great.”

GEOFF RICCO, CO FOUNDER & LEAD ENGINEER AT TERRACRAFT OUTDOORS

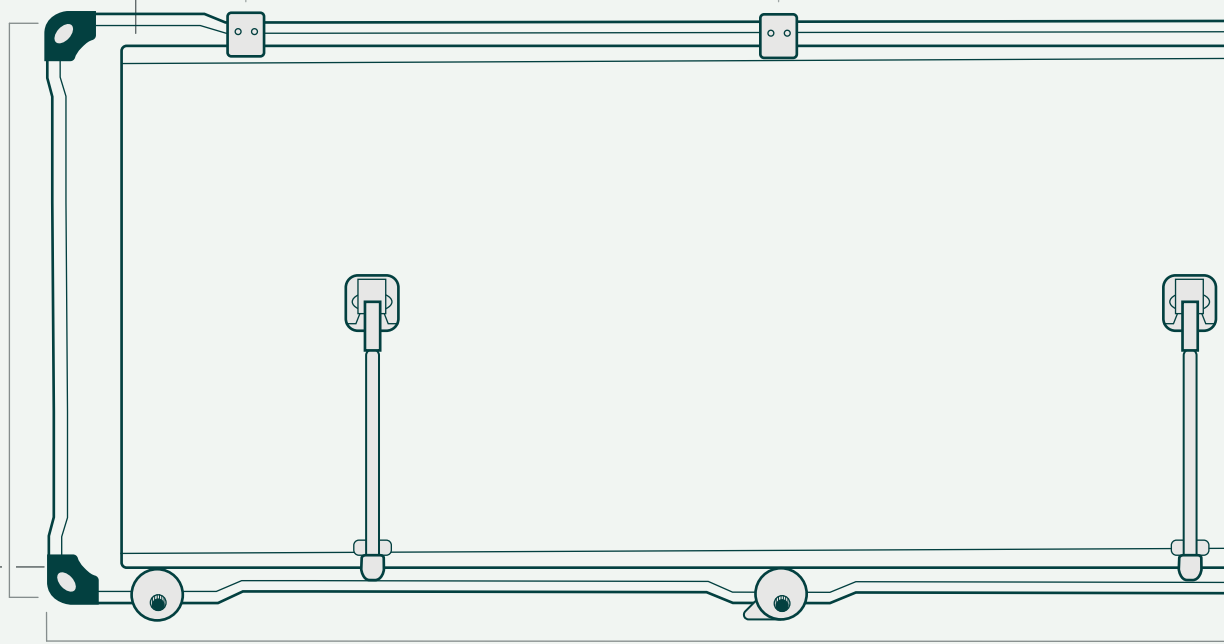


Carbon fiber layering provides unparalleled strength and rigidity.

Durable mounting hardware secures panel to trailer  
at six anchor points.

22.5in (575mm)

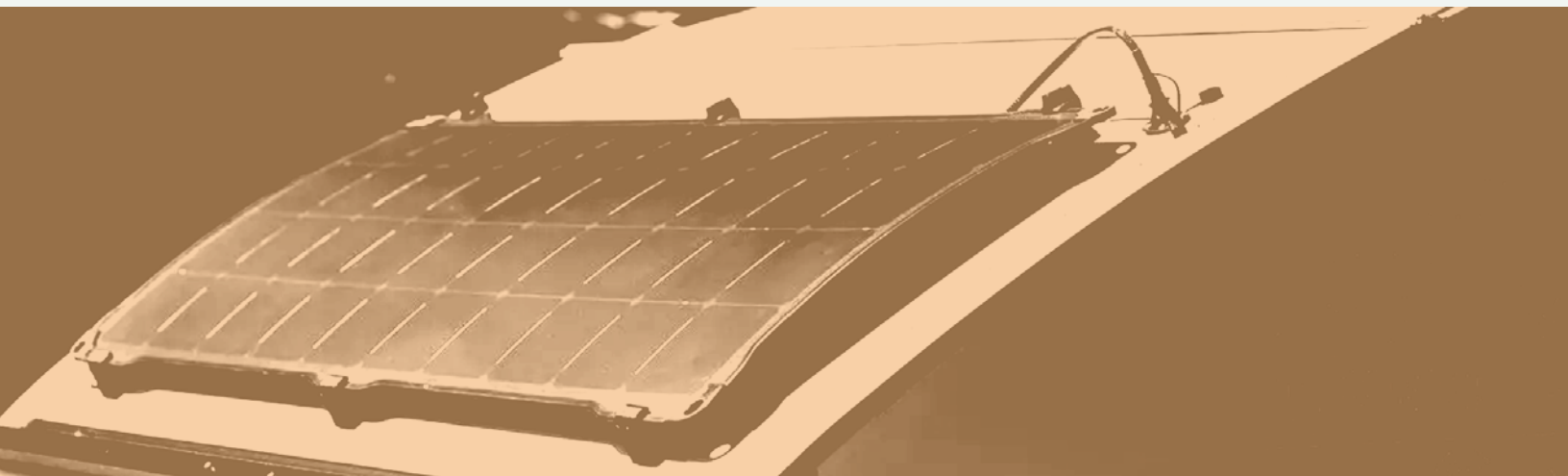
Pain-free rounded  
corners with  
protective corner  
grommets.



42.2in (1073mm)

Specification	Data
Nominal Max power (Pmax)	100W
Optimal Operation Voltage (Vmp)	17.3V
Optimal Operation Current (Imp)	5.8A
Open Circuit Voltage (Voc)	21.2V
Short Circuit Current (Isc)	6.2A
Cell Type	Sunpower Maxeon GIII Premium ME3 25.1% Eff.
Cell Arrangement	32 (4×8)
Dimensions	565×1080mm (22.2×42.5")
Panel Thickness	9mm (3/8")
Weight	2.3kg (5.3lb)
Cable/Connector	2M (6') 14AWG
Connector	Plain end
Maximum Applied Bending Moment	220 N-m
Perimeter flange size	25×3mm (1×1/8")

Electrical data at STC (1000W/m<sup>2</sup>, AM 1.5, 25 DegC)



The dropLeaf is Canadian made,  
in Saskatoon, by adventurers like you.

Two-year warranty included. Contact us for inquiries and support.

[www.lightleafsolar.com](http://www.lightleafsolar.com)

[info@lightleafsolar.com](mailto:info@lightleafsolar.com)

306 371-6503

2225 1st Ave N, Saskatoon, SK

